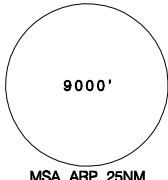
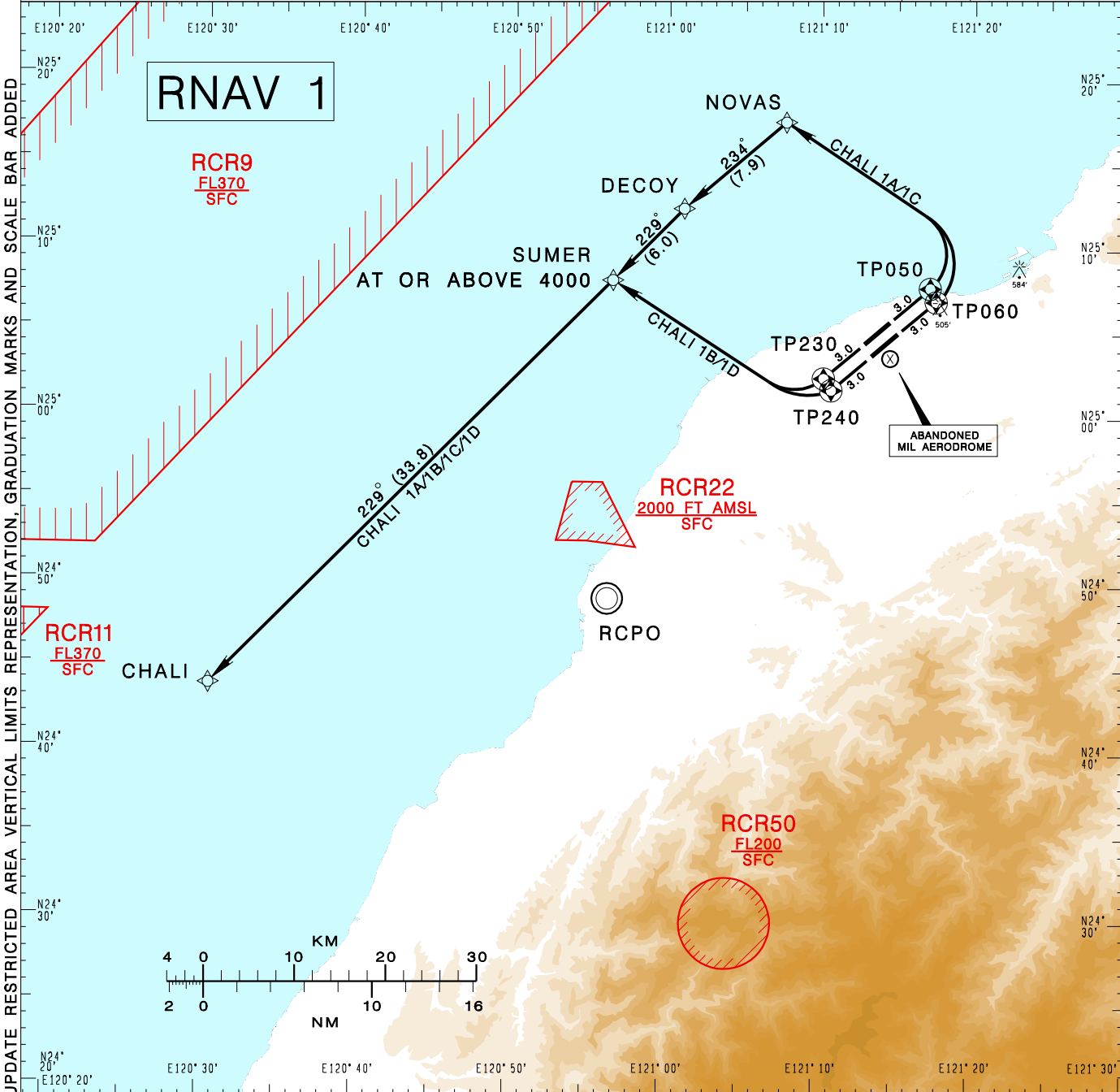


**臺灣桃園國際機場**  
TAIPEI/TAIWAN TAOYUAN INTL AD

RCTP SID  
CHALI 1A RNAV(RWY05R) CHALI 1C RNAV(RWY05L)  
CHALI 1B RNAV(RWY23L) CHALI 1D RNAV(RWY23R)

TAIPEI APP 125.1 128.5	TAIPEI TWR 118.7 129.3	ATIS 127.6	 MSA ARP 25NM
Apt Elev: 108'	Trans Level: FL130	Trans Alt: 11,000'	
BEARINGS ARE MAGNETIC; DISTANCES ARE NAUTICAL MILES; ELEVATIONS, HEIGHTS IN FEET			



CHANGES: NEW PAGE NUMBER, UPDATE RESTRICTED AREA VERTICAL LIMITS REPRESENTATION, GRADUATION MARKS AND SCALE BAR ADDED	<p><b>CHALI ONE ALFA RNAV DEPARTURE</b> Climb on RWY HDG until leaving 600ft, then direct to TP060, NOVAS, DECOY, SUMER, CHALI. Cross SUMER at or above 4,000ft.</p>	<p><b>NOTE</b> 1. RWY 05L/05R: speed restriction of 210KT IAS maximum until established on track to NOVAS. 2. RWY 23R/23L: speed restriction of 210KT IAS maximum until established on track to SUMER. 3. Minimum climb gradient required: RWY 05L: 4.1% (250 ft/NM) until NOVAS RWY 05R: 4.7% (286 ft/NM) until NOVAS RWY 23L: 3.4% (210 ft/NM) until SUMER 4. Radar monitoring required.</p>
	<p><b>CHALI ONE CHALI RNAV DEPARTURE</b> Climb on RWY HDG until leaving 600ft, then direct to TP050, NOVAS, DECOY, SUMER, CHALI. Cross SUMER at or above 4,000ft.</p>	
	<p><b>CHALI ONE BRAVO RNAV DEPARTURE</b> Climb on RWY HDG until leaving 600ft, then direct to TP240, SUMER, CHALI. Cross SUMER at or above 4,000ft.</p>	
	<p><b>CHALI ONE DELTA RNAV DEPARTURE</b> Climb on RWY HDG until leaving 600ft, then direct to TP230, SUMER, CHALI. Cross SUMER at or above 4,000ft.</p>	